

Smart Asset Monitoring

« Transform your data into intelligent information »



in partnership with



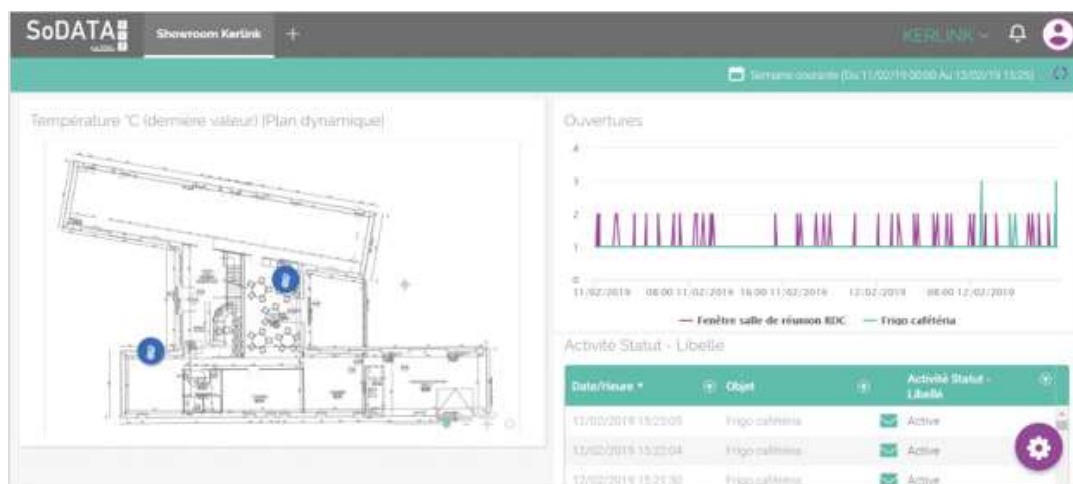
Challenges

- How to monitor cold-chain respect for sensitive goods?
- How to follow the temperature and doors/windows opening?
- How to control the right use of rental assets?
- How to ensure quality of services, improve the use experience and secure your revenue?



Kerlink & Synox solution

- Real time temperature and opening data
- Temperatures follow-up with variation history
- Alerts in case a threshold is reached or if a door or window is opened

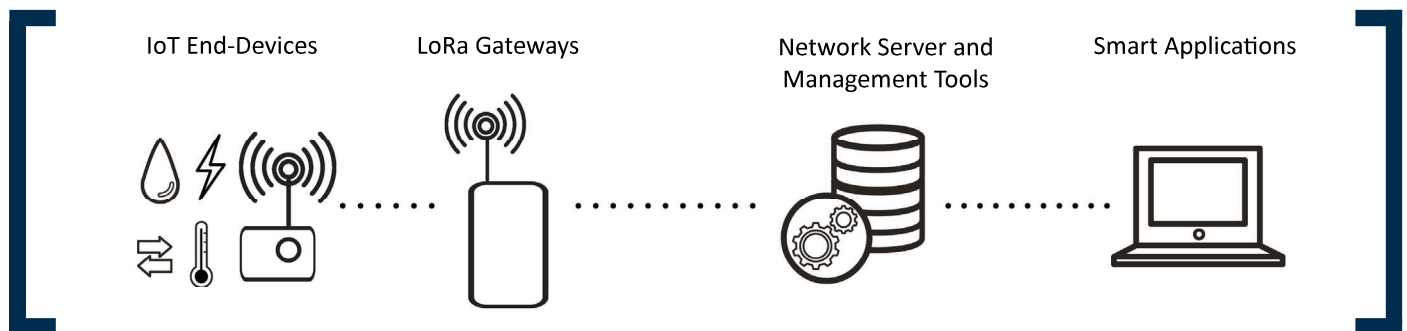


Smart Asset Monitoring

« Transform your data into intelligent information »

Architecture & Benefits

- Open technical solution with the « Best of » the value chain: Sensors, Connectivity, Application
- IoT solution based on LPWA/LoRaWAN technology
- Scalable solution: Addressing multiple use cases with a multivendor ecosystem



Ask for your turnkey Discovery Kit !

- 1 Ineosense sensor for temperature
- 1 Ineosense sensor for temperature, hygrometry & door opening detection
- 1 Wirnet™ iFemtocell Gateway
- Applications: WMC Core Network
- Synox application (SoM2M / SoDATAVIZ)

Also including following services:

- Prestaging with gateways & devices declaration in Wanesy™ Management Center & application
- Half day training



sales@kerlink.fr

+ 33 2 99 12 29 00

1 rue Jacqueline Auriol
35235 Thorigné-Fouillard
France

contact@synox.io

+33 9 70 26 40 12

Parc Eureka, Le Tucano,
836 Rue du Mas de Verchant
34000 Montpellier
France

kerlink
communication is everything

SYNOX
innovate together