

Smart Building Solution

« Building Operation & Maintenance »



in partnership with

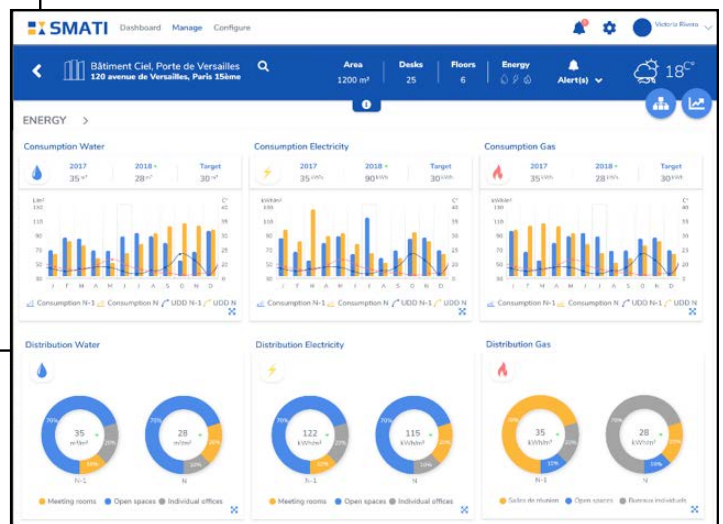
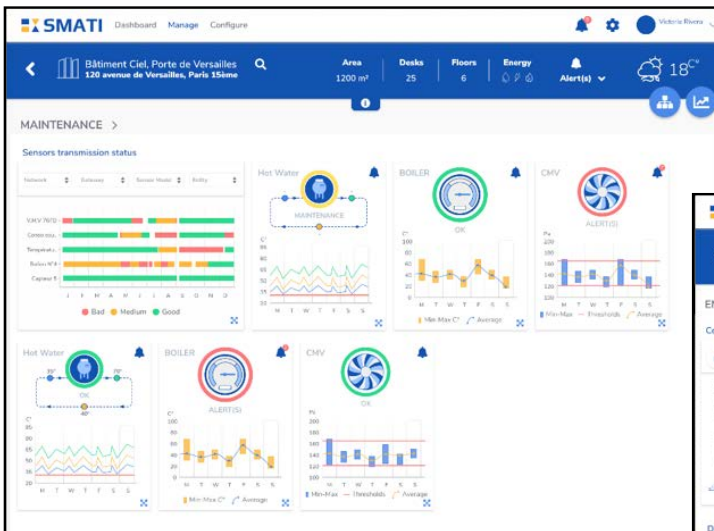


Challenges

- Reduce energy and water costs
- Improve operational efficiency
- Create new value monetizing your building assets (new digital services)
- Reduce technical and business risks using already integrated and proven solutions

Kerlink & HXperience solution

- **Kerlink acts a « Solution Designer » with HXperience**
- **Connected & Predictive Maintenance** (solve problems remotely & generate strong value for your customers)
- **Analysis of consumption per usage and Data cross referencing with business indicators**
- **Decision support** (investment, renovation, business process optimization)



Other available Use case

- **Shared Space Management / Office Building** (analyze spaces usage and increase occupancy rate, improve occupant comfort and productivity)

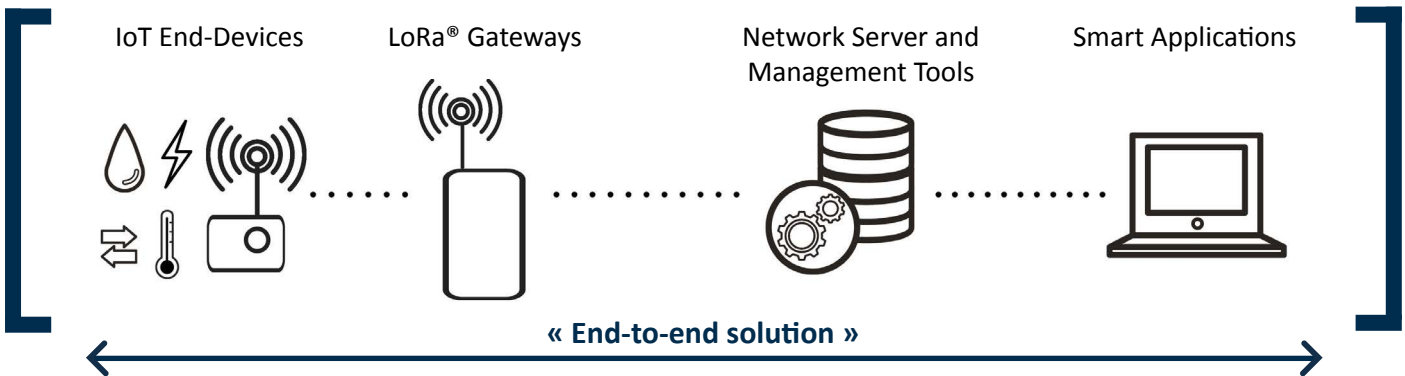
All product specifications are subject to change without notice

Smart Building Solution

« Building Operation & Maintenance »

Benefits

- **Open standard solution with the « Best of » the value chain:** Sensors, Connectivity, Applications
- **Robust & Proven Solution:** demonstrated scalability with major customers in production
- **Scalable solution:** Addressing multiple use cases with a multivendor ecosystem



- **Catalog of more than 30 sensors already integrated into the solution** (ADEUNIS, ATIM, NKE...)
- Carrier grade LoRaWAN™ connectivity
- **SMATI Business application by HXperience**
- Open through API and evolutive
- User Centric with easy to customize dashboards
- Predictive services on equipment and usage
- Fully integrated solution: no IT skills..., ready to deploy
- **Single Point of Contact** for support & **Network Operations Center**

Ask for your turnkey Discovery Kit!

The following items are included:

- 2 Sensors: NKE / THr Indoor + NKE / Flash'O
- 1 Kerlink Wirnet™ iFemtoCell Gateway
- 3 months access to Kerlink Wanegy Management Center (WMC) for LoRa Network Management
- 3 months access to HXperience SMATI suite for Business Data Management
- Services: prestaging (declaration of GW and devices in WMC), training, support and debriefing



sales@kerlink.fr
+33 2 99 12 29 00
1 rue Jacqueline Auriol
35235 Thorigné-Fouillard
France

contact@hxperience.com
+33 9 66 82 85 72
130 rue de Lourmel
75015 Paris
France

kerlink
communication is everything

HXPERIENCE
Like Never Before

All product specifications are subject to change without notice